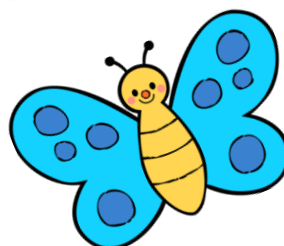
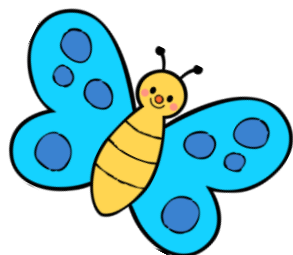
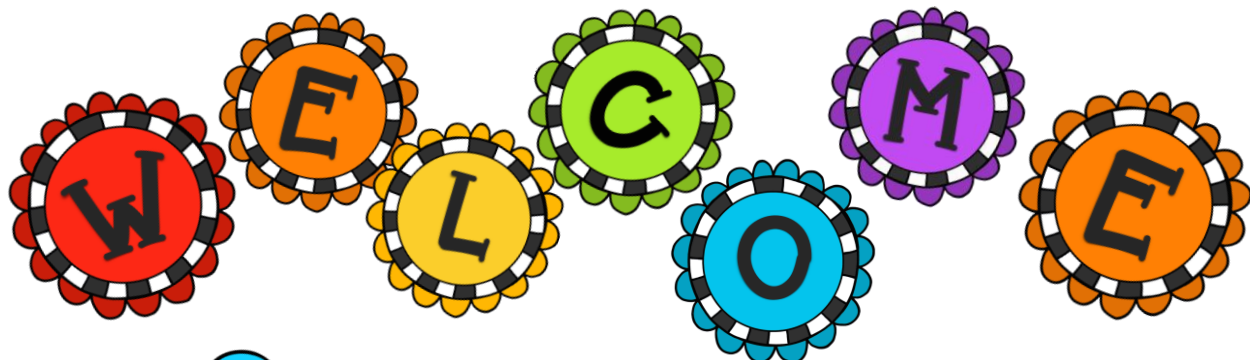




MERRYLANDS
PRIMARY SCHOOL AND NURSERY

Growth Through Learning



Nursery

2025/2026



Parent

Information

pack



Meet our Nursery Team



Mrs Alam
Nursery LSA



Mrs Pearce
Nursery LSA



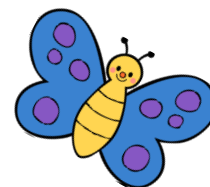
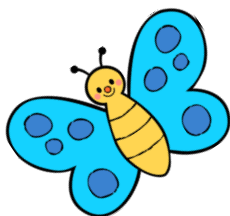
Mrs Tobin
Nursery Manager



Miss Neil
Nursery LSA



Our Nursery School Uniform



White polo shirt/shirt
Navy jogging bottoms
Grey trousers/skirt



Grey pinafore dress with a plain navy-blue sweatshirt or cardigan.

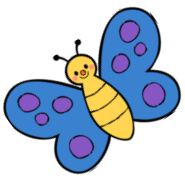
Navy shorts

Dark blue gingham dress

Please ensure everything is named.



Footwear should be black school shoes or plain black trainers and easy for your child to take off or put on.



Communication



There is always a member of staff on the door/gate, to answer any questions.



By using Tapestry you can contact us by sending a memo, as well as uploading your own observations at home. Regular updates and information is added weekly or sometimes daily.



Parent activity sessions are held once every half term.



Special events throughout the year including Christmas singalong, sports day and end of Nursery celebration in July.



Support your child at home by following activities which will be uploaded each Friday on to Tapestry.



01268 417893 / admin@merrylands-pri.essex.sch.uk / www.merrylandsprimaryschool.co.uk



Times for Nursery sessions

All day children 8.30 am - 3.30 pm

AM children Morning: 8.30 am - 11.30 am

PM children Morning: 12.30 am - 3.30 pm

Morning flexible drop off 8.30 am - 8.50 am

Afternoon flexible pick up 3.15 pm - 3.30 pm

Any questions please ask.



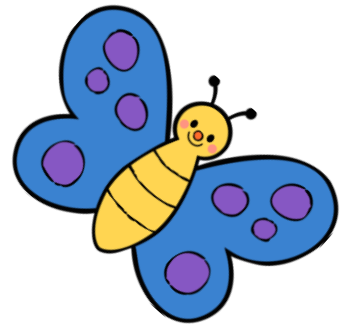
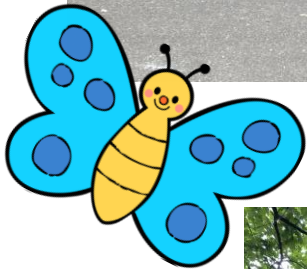
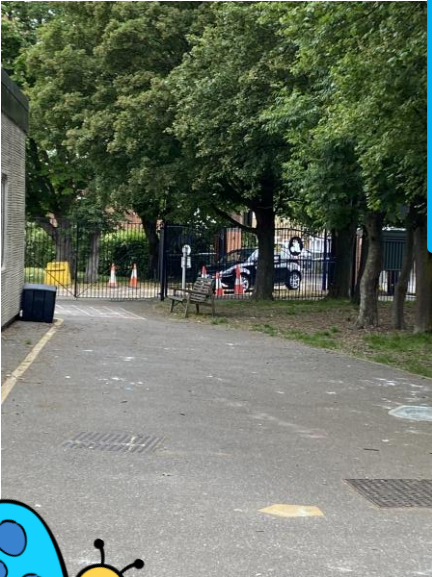
Pick and drop off points

Front door

All day children drop off and pick up point.

AM children drop off point.

PM children pick-up point.



Back gate

AM children pick up point

PM children drop off point.



Just to say...

Please ensure spare clothes are always in your child's bag in case of a toilet accident or messy play. Please name as much as possible.

Please provide a pack of baby wipes.

If your child is in nappies, please ensure enough spares are in their bag.

Please provide a water bottle.

We provide snack each day with milk.

Please bring in wellies to leave in the Nursery.

Appropriate outdoor clothing for different weathers, as we do use the garden in all weather.



- If your child stays for lunch, please remember we are a 'nut-free' school due to allergies.
- Grapes and tomatoes must be cut in half.
- Please ensure you have informed staff of any allergies or medical conditions your child may have.
- If your child is unwell or you are going on holiday, please ensure school office is aware.

We are all looking forward to support your child on an exciting learning adventure.

